

# About our community nursing team



Medway Community Healthcare CIC providing services on behalf of the NHS  
Registered office: MCH House, Bailey Drive, Gillingham, Kent ME8 0PZ  
Tel: 01634 337593  
Registered in England and Wales, Company number: 07275637

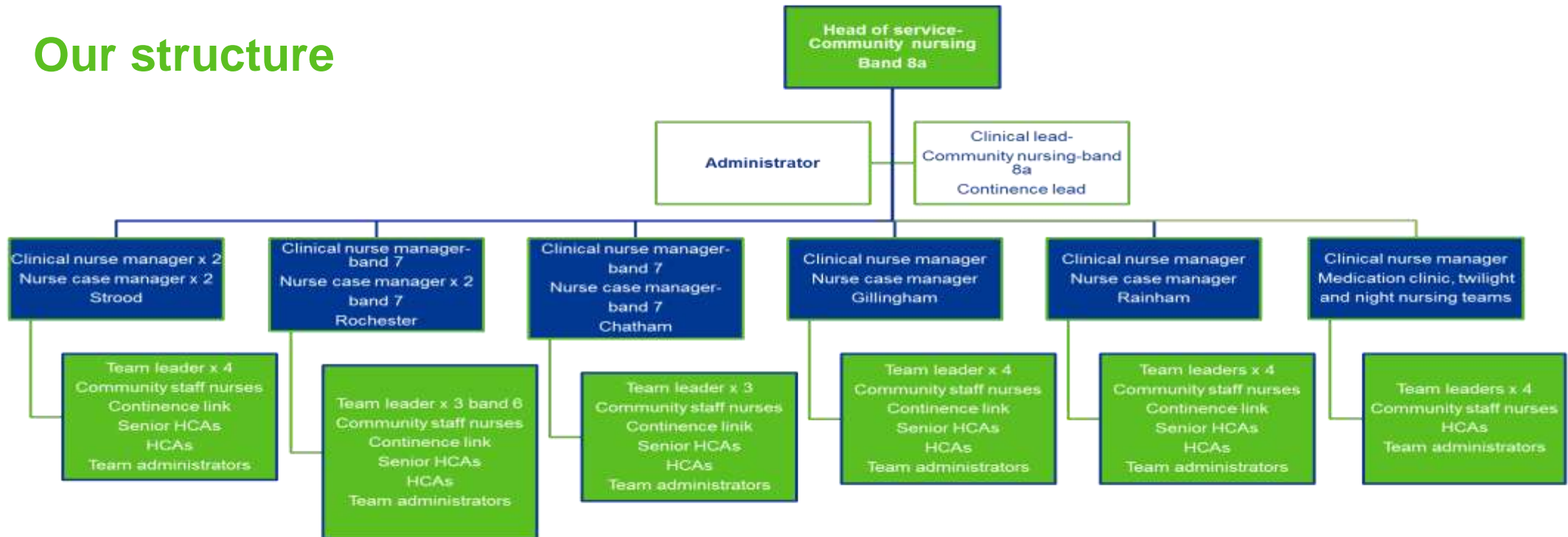
[www.medwaycommunityhealthcare.nhs.uk](http://www.medwaycommunityhealthcare.nhs.uk)



# What do we do?

Community nursing is a 24/7, 365 day service providing a range of care, treatments and support for adults who are housebound. A range of clinics is also provided for mobile patients including medication, leg ulcer and continence.

## Our structure



## Our team(s)

Community nursing, nurse case management, continence, continuing healthcare

## What our patients say

You're the only one who fought my corner

97% of patients would recommend us to family and friends



Everything we've needed you done, we really appreciate it