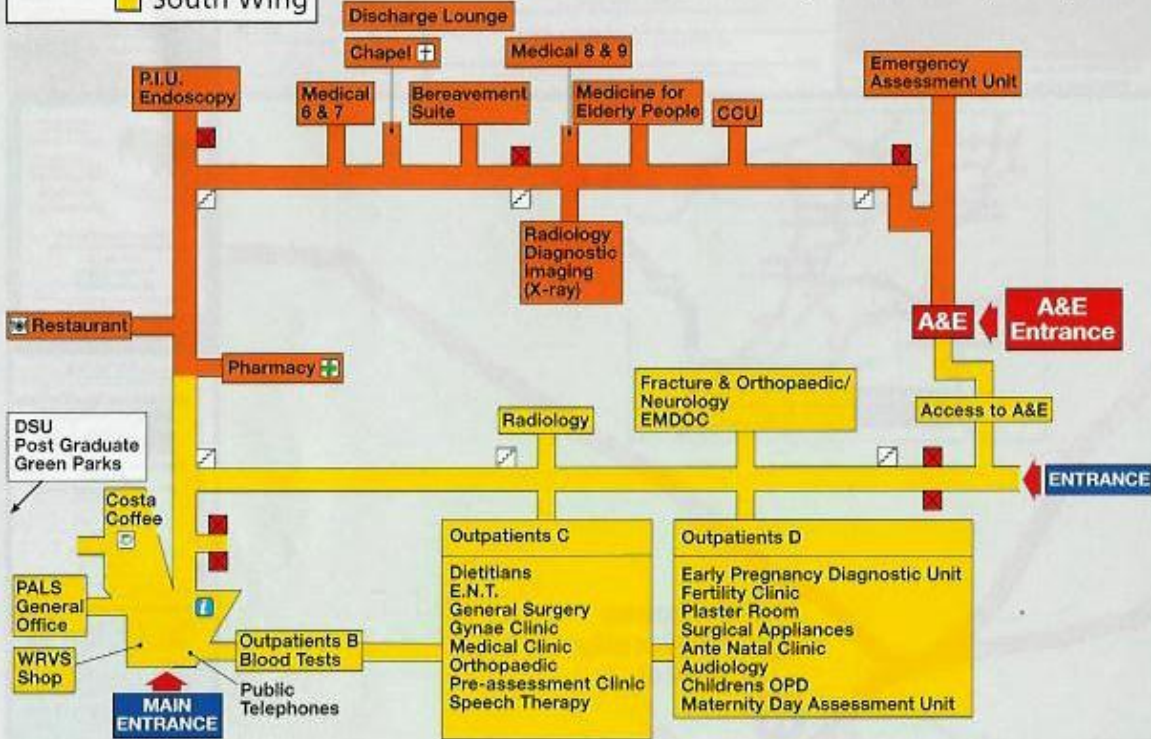


Princess Royal University Hospital

Level 1 ■ North Wing
■ South Wing

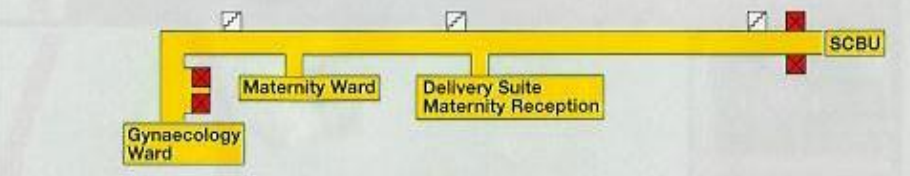


Wards and Departments	Wing	Level	Wards and Departments	Wing	Level	Wards and Departments	Wing	Level	Wards and Departments	Wing	Level
Accident & Emergency	North	1	ICU	South	2	Outpatients D	South	1	Surgical 6 & 7	North	2
Anaesthetics	South	2	Main Reception	South	1	Early Pregnancy Diagnostic Unit	South	1	Surgical 8	North	2
Bereavement Suite	North	1	Maternity	South	3	Fertility Clinic	South	3	Surgical Admin	North	2
CCU	North	1	Maternity Reception	South	3	Plaster Room	North	0	Surgical Admissions Lounge	North	2
Chapel	North	0	Medical 1, 2 & 4	South	3	Surgical Appliances	North	0	Surgical Assessment	North	2
Chapel of Rest	North	0	Medical 3	North	0	Ante Natal Clinic	North	0	Theatres	South	2
Chartwell Reception	North	0	Medical 5 & Stroke Unit	North	1	Audiology	North	0	Theatres	North	2
Chartwell Ward	North	0	Medical 6 & 7	North	1	Childrens OPD	North	1	Trust H.O.	South	2
Childrens Ward	South	2	Medical 8 & 9	North	1	Maternity Day Assessment Unit	North	0	West Kent Eye Centre	South	2
Clinical Measurement	North	0	Medical Directorate	North	0	PALS	South	1	X-ray	North	1
Costa Coffee	South	1	Medicine for the Elderly	North	1	Pathology	South	2			
Delivery Suite	South	3			Pharmacy	North	1				
Diagnostic Imaging (x-ray)	North	1	Outpatients B	South	1	Planned Investigation Unit (PIU)	North	1			
Discharge Lounge	North	1	Blood Tests	South	1	Private Patients Unit	North	2			
EBME & Sterile Services	North	0			Purchasing & Supplies	North	0				
EMDOC	South	1	Outpatients C	South	1	Radiology	North/South	1			
Emergency Assessment Unit	North	1	Dietitian	South	1	Restaurant	North	1			
Endoscopy	North	1	E.N.T.	South	3	SCBU	South	3			
Estates	North	0	General Surgery	South	1	Shop (WRVYS)	South	1			
Fracture & Orthopaedic / Neurology	South	1	Gynaecology Clinic	South	2	Social Services	South	2			
General Office	South	1	Medical Clinics	North	0	Staff Bank	North	0			
Gynaecology	South	3	Orthopaedic Pre-Assessment Clinic	North	2	"Surgical 1, 2 & 3"	North	2			
			Speech Therapy	North	2	Surgical 4 & 5	North	2			

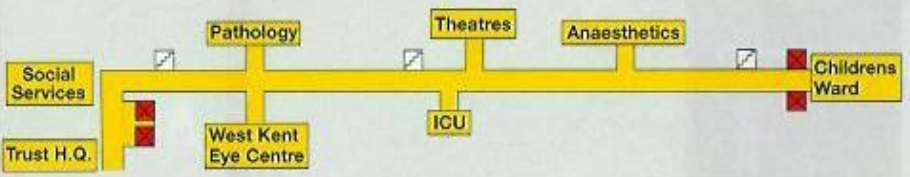
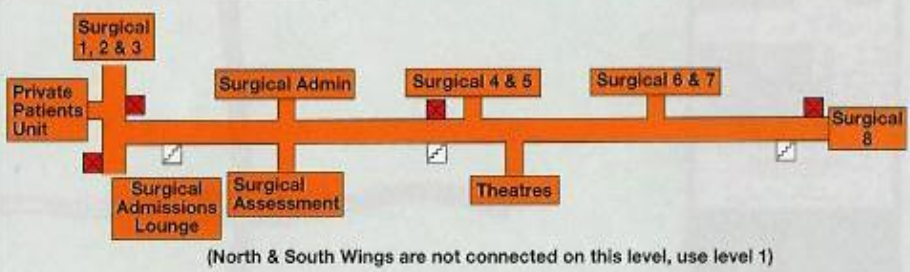


King's College Hospital NHS Foundation Trust

Level 3 ■ South Wing



Level 2 ■ North Wing
■ South Wing



Level 0 ■ North Wing

