

**Hull University Teaching Hospitals NHS Trust**

**JOB DESCRIPTION**

<b>JOB TITLE:</b>	<b>Experienced/Specialist Radiographer</b>
<b>DEPARTMENT:</b>	Radiology
<b>GRADE:</b>	Band 6
<b>ACCOUNTABLE TO:</b>	Section Manager
<b>RESPONSIBLE TO:</b>	Section Manager

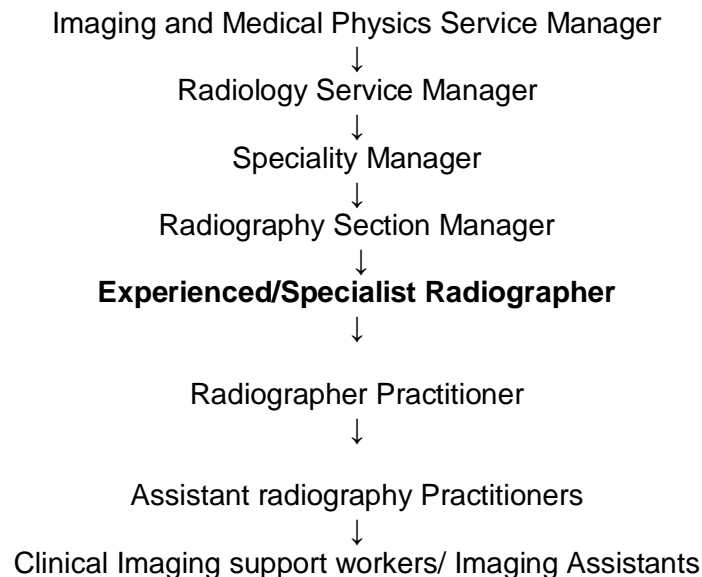
**JOB SUMMARY**

*You will be an experienced radiographer in the Radiology Department working in a specialist area, being able to assess and treat your own specialist workload of patients. You will be able to work autonomously, seeking advice as and when is necessary and will be accountable for your own professional actions. You may be required to assess complex, acute and other patient conditions and will supervise, mentor and appraise recently qualified radiographers, support workers, assistant practitioners and students. You are required to work independently in unpredictable situations e.g in emergencies during unsocial hours*

*You will also be expected to:*

- Work as part of a multidisciplinary team providing a high quality service whilst maintaining high standards of patient care.
- Ensure that practice is carried out in accordance with department policies and protocols.
- Support the Lead Radiographer in the planning and delivery of a high quality imaging service which is responsive to the needs of the patient.
- Assist in the supervision and teaching of junior staff and students and undertake student clinical assessments
- Undertake all general radiographic procedures and acquire a good level of skill and knowledge in all aspects of radiology

## **ORGANISATION CHART**



## **RESPONSIBILITIES**

- 1.1 Work under direction from the Section manager and occasionally deputise.
- 1.2 Help supervise the effective and efficient running of the department including supervision of students, assistant radiography practitioners and clinical imaging support workers.
- 1.3 Assist the Section Manager in monitoring and controlling workloads ensuring that staff flexibility is maximized and an efficient service is delivered.
- 1.4 Rotate between your designated specialist areas of the radiology department.
- 1.5 Maintain high working standards by keeping an up to date knowledge of developments and techniques in radiography and to help facilitate the introduction of such as appropriate.
- 1.6 Pursue your own educational and professional development, following your professional code of conduct
- 1.7 Undertake your own educational and professional development, following your professional code of conduct.
- 1.8 Participate in department and clinical audit and research projects.
- 1.9 Participate in the appraisal system and contribute to any post review as necessary
- 1.10 Report any malfunction and breakdown of equipment, completing department equipment fault records and taking the appropriate action if the equipment is unsafe. Report findings to the Section manager.
- 1.11 Identify and manage challenging behaviour in a tactful and sensitive manner.

## **2      KNOWLEDGE AND SKILLS**

- 2.1 Undertake all imaging examinations in your designated imaging department using established departmental guidelines, policies and procedures.
- 2.2 Achieve and maintain a high standard of Radiographic technique, selecting imaging modalities and techniques appropriate to suit the needs of the patient and ease diagnosis for the referring clinician.
- 2.3 Compile a personal and professional portfolio in conjunction with the PPDR process and undertake reflective practice.
- 2.4 Actively participate in the induction of new employees, which may include mentorship and provision of training.
- 2.5 To update and maintain IT skills required for the radiology service.
- 2.6 Assist in the departmental Quality Assurance program and be actively involved in future developments.
- 2.7 Monitor the quality of work in own area and alerting others to quality issues.
- 2.8 Assist with the development and review of policies, protocols and guidelines.
- 2.9 Move and handle patients, x-ray equipment, moving and handling devices and other medical equipment provided safely and correctly.
- 2.10 Develop and maintain effective dialogue between patients, work colleagues and all referring clinical areas.
- 2.11 Exercise judgment and empathy when dealing with patient enquiries and to resolve patient problems.
- 2.12 Communicate to patients and visitors in an empathic and reassuring manner so as to enable the radiological examinations to be undertaken and diagnosis or treatment to be provided.
- 2.13 Liaise and report regularly to the Section Manager .
- 2.14 Provide information and advice to patients, relatives and other medical staff about safety/radiation issues.
- 2.15 Have knowledge about and assist in the departmental Quality Assurance Programme and be involved in future developments
- 2.16 Undertake regular equipment testing and reject analysis, ensuring appropriate recoding, documentation and interpretation of results
- 2.17 Comply with the Data protection Act.
- 2.18 Demonstrate personal responsibility in all circumstances.

## **3      EFFORT AND ENVIRONMENT**

- 3.1 Regular usage of expensive, highly specialised and complex equipment is involved.
- 3.2 The positioning and manoeuvring of patients and equipment relevant to every individual examination requirement.
- 3.3 Show complete consideration for the patient inclusive of privacy and dignity.
- 3.4 Working with children, vulnerable adults, aggressive patients and the critically ill. Trauma and forensic cases are involved in this role.
- 3.5 Frequently have to deal with blood and body fluids, infectious patients requiring special needs, unpleasant body odours, aggressive patients, working unsocial hours and lone working.
- 3.7 Often have to respond to unpredictable work patterns, interruptions, equipment malfunctions, staff shortages, staff absence and the need to meet deadlines for radiology and other clinical areas.

- 3.8 Frequently wear personal protective equipment for radiation and/or infection control purposes.
- 3.9 Often have to cope with anxious patients who are terminally ill or have had recent diagnosis or are undergoing investigation for cancer.
- 3.10 Discussing contentious issues with colleagues and medical staff is occasionally encountered.
- 3.11 Working outside normal working hours (this includes weekends and bank holidays) providing a 24 hour service as required.
- 3.12 Possible lone working.
- 3.13 Ability to wear relevant Personal Protective Equipment (PPE) when necessary, often for prolonged periods.

## **HEALTH AND SAFETY**

In addition to the Trust's overall responsibility for your health and safety you have a personal responsibility for your own health and safety. As such you are required to inform your line manager of any safety issues that you identify, that could affect you or others in the workplace. You must co-operate with management and colleagues at all times in achieving safer work processes and work places, particularly where it can impact on others.

As a Trust employee you will be trained in the correct use of any equipment provided to improve safety and health within the Trust. You are required to use the equipment when necessary and as instructed which will include checking the equipment is safe to use, prior to its use and must report any defects immediately to your line manager. You are required to provide adequate supervision to ensure compliance with safe work practices.

## **Infection Control**

In addition to the Trust's overall responsibilities under the Health Act Code of Practice for the Prevention of HCAI 2006 for your safety, you have a personal responsibility to ensure that your work adheres to this Code in the delivery of safe patient care within the organisation/

This job description is not meant to be exhaustive .It describes the main duties and responsibilities of the post. It may be subject to change with the development of organisational and service needs and wherever possible change will follow consultation with the post holder.

## **Sustainability**

To actively support the Trusts goals for sustainability by encouraging and adopting sustainable ideas and practices.



## **HEALTH AND SAFETY**

In addition to the Trust's overall responsibility for your health and safety you have a personal responsibility for your own health and safety. As such you are required to inform your line manager of any safety issues that you identify, that could affect you or others in the workplace. You must co-operate with management and colleagues at all times in achieving safer work processes and work places, particularly where it can impact on others.

As a Trust employee you will be trained in the correct use of any equipment provided to improve safety and health within the Trust. You are required to use the equipment when necessary and as instructed which will include checking the equipment is safe to use, prior to its use and must report any defects immediately to your line manager

You are responsible for the implementation and adherence to Trust safety policies and procedures for your section area.

## **INFECTION CONTROL**

In addition to the Trust's overall responsibilities under the Health Act Code of Practice for the Prevention of HCAI 2006 for your safety, you have a personal responsibility to ensure that your work adheres to this Code in the delivery of safe patient care within the organisation.

This job description is not meant to be exhaustive .It describes the main duties and responsibilities of the post. It may be subject to change with the development of organisational and service needs and wherever possible change will follow consultation with the post holder.