

Recruitment Profile

Job Title: Fellow in COVID-19 psychiatry research

About the Job

This is an opportunity for 3 doctors currently on psychiatry specialty training programmes in London to spend 2 sessions (1 day) a week working on a research project related to the psychiatry of COVID-19. The Fellows will remain on their current clinical training programme and be supervised by relevant senior researchers during their research time.

Background to the project

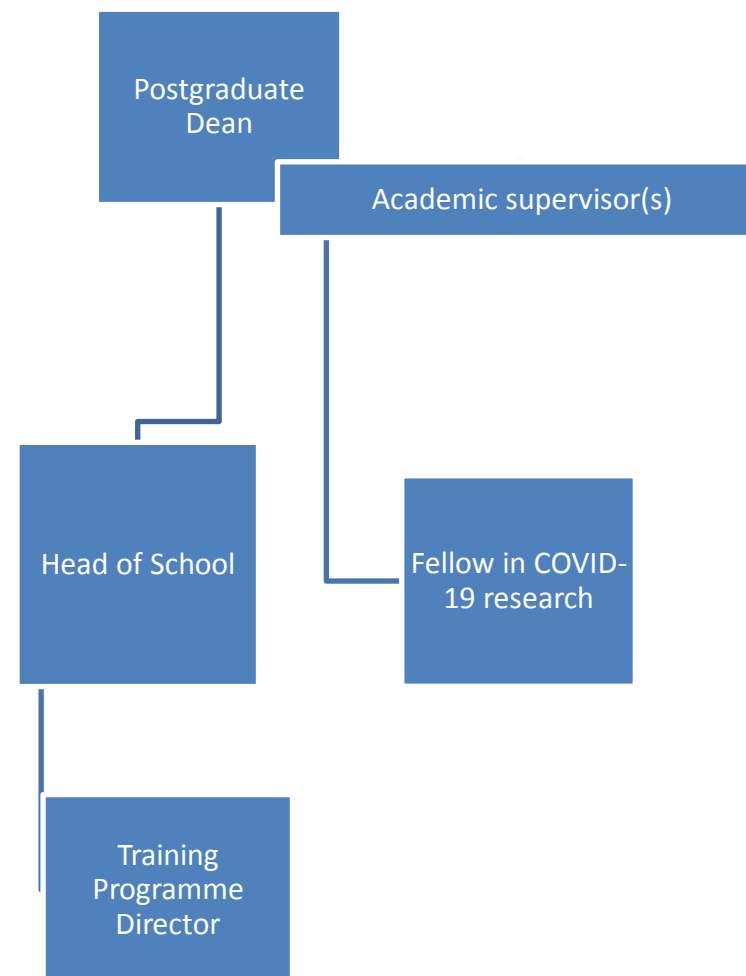
COVID-19 has had a huge impact on both clinical training and service delivery for psychiatry trainees. This has had knock on effects in terms of the time that trainees have had to be able to seek out and complete research projects. Furthermore the opportunities available to trainees in terms of research projects and supervision has been adversely impacted by pandemic. COVID-19 has, conversely, by virtue of it's impact on mental health both direction and via number of indirectly mechanism, provided potential research opportunities due to several research groups in London leading local, national and even international research projects studying these impacts.

Health Education England has recognised this gap and provided funding for trainees to be able to be released from clinical work for a day a week for a year which, in potential combination with special interest days, will provide opportunities for trainees to participate in a research project and receive supervision and relevant training as well as experience in research methods and processes. Leaders of COVID-19 psychiatry research projects in London are keen to support opportunities for the development research skills in psychiatry trainees and can provide a range of projects, and relevant supervisors, for projects to be done over the course of a year from March 2023.

This scheme therefore aims to provide

- 1 Research training opportunities for psychiatry specialty trainees in London.
- 2 Funding for time for the specialty trainees to be released from clinical work for 1 day a week.
- 3 Academic supervisors to link the Fellows to suitable research projects on the

Organisation Structure



psychiatry of COVID-19 that will provide significant experience and develop skills in research.

As the post is part-time the post-holder will be expected to continue to participate in clinical activities as usual apart from the one day per week in this post. This will be in addition to special interest sessions and we would request the Fellows to use their special interest time on the project to maximise this opportunity.

About Us

HEE provides leadership for the education and training system. It ensures that the shape and skills of the future health and public health workforce evolve to sustain high quality outcomes for patients in the face of demographic and technological change. HEE ensures that the workforce has the right skills, behaviours and training, and is available in the right numbers, to support the delivery of excellent healthcare and drive improvements through supporting healthcare providers and clinicians to take greater responsibility for planning and commissioning education and training.

Our **ambition** is to be the best organisation of our type in the world by living our values every day.

Our Core **Values** are that everyone feels **valued and respected** and are **included and involved** in everything that affects them; are **trusted** to make decisions with clear reasons in order to **be empowered** to deliver; are committed to clear, **effective communication**, which is transparent and open when sharing information; takes **pride and has integrity** in everything we do and recognises that everyone has a significant contribution whilst taking **personal responsibility and accountability** for actions and behaviours.

Recruitment Profile

About You

This section details the personal attributes we require for this role. If you feel these describe you, we would welcome your application

Behaviours and Values

- Makes sure they work in a way that complies with legislation and organisation policies and procedures such as local and national research ethics procedures
- Commitment to health and healthcare in London, driven by the needs of patients, service users and external stakeholders.
- Well organised, with effective time management and good administrative capability.
- Commitment to personal and professional development.
- Evidence of good interpersonal skills.
- Operates with integrity and treats services users, partners, and colleagues with respect and dignity at all times
- Aware of the impact of own behaviour on others and takes responsibility to address any personal development needs.
- Promotes a safe environment for the exchange of views and ideas and encourages creativity and innovation to facilitate continuous improvement
- Will consider the most effective way to promote equality of opportunity and good working relationships in employment and service delivery and has the ability to take actions which support and promote this agenda

Skills and Abilities

- Interest in and understanding of health care and health issues, particularly mental health, related to COVID-19
- Interest in, and understanding of, psychiatry research, especially that related to COVID-19
- Effective interpersonal skills including building and maintaining strong working relationships with colleagues and good team working.
- Leadership skills
- Ability to initiate and sustain a project / activity requiring collaboration with colleagues in a research team and their collaborators.
- Understanding of evaluation for projects / activity
- Analytical, problem solving and trouble shooting skills.
- Good communication skills, including public speaking and presentation skills. Understanding of how to present and communicate complex issues to a variety of audiences.
- An interest in improving knowledge about the impact of COVID-19 on mental health
- Expert level knowledge and experience of Microsoft Excel, PowerPoint and Word
- Experience of writing high quality reports on projects undertaken for internal and external stakeholders
- Ability to use online virtual platforms for training/meetings
- To monitor policy developments relevant to all aspects of education and training, as directed.
- Ability to analyse and interpret data to highlight issues and support decision making.

Experience and Knowledge

- Current Specialist Psychiatry Trainee in London at CT3 or above
- Some research experience in either undergraduate or postgraduate education is preferable.
- Author or co-author, or contribution to publications or abstracts in peer reviewed and professional journals.
- Experience of research desirable

Qualifications and Training

- GMC registration or professional equivalent.
- Satisfactory progression through training as demonstrated by satisfactory ARCP outcomes.
- Holds MRCPsych for specialty for stage of training
- Higher degree or other evidence of academic study, research or significant initiatives in healthcare beyond the minimum requirements of the training

<ul style="list-style-type: none"> • Knowledge of the COVID-19 psychiatry research. • Knowledge of basic research methods. 	<p>programme.</p> <ul style="list-style-type: none"> • If relevant, by the time of interview will have OOPE provisionally approved by supervisor and training programme director • S12 approval required for clinical sessions.
--	---

Expected Outcomes

About your role This section details the outcomes and deliverables that would be expected from the role	
Engaging with a research supervisor and team <p>The postholders will be matched with an academic supervisor and their research team/collaborators that best fits their research interests and what experience and skills they would most like to gain from the post. The postholders will be expected to actively engage with the supervisor in regular meetings, the frequency and length of which will be adapted to the particular project, the stage of it and the progress made in the project.</p> <p>It is expected that the post holder will nurture key relationships and maintain networks internally and externally beyond the post.</p>	Delivering research project <ul style="list-style-type: none"> • Provide regular reporting on project progress • Manage relationships with the research team • Develop increasing independence in the research project delivery, as appropriate • Support the identification and sharing of best practice across HEE London and identify areas for improvement • Liaise with the research team and collaborators to ensure successful delivery of projects • Write up the results of the project as any combination of; internal report, conference/meeting abstract, scientific paper (ideally peer reviewed)
Research skills <ul style="list-style-type: none"> • To develop skills in psychiatry research methodology and analysis • Develop skills in working within and then potentially taking on aspects of leadership within a research team. • Develop scientific writing skills for both academic outputs and funding applications. 	Academic output <ul style="list-style-type: none"> • Submit the results of the project as any combination of; internal report, conference/meeting abstract, scientific paper (ideally peer reviewed) • Present the results of the project within the research team meeting and/or to other relevant audiences in relevant research, clinical or other settings

Benefits Information

About the Benefits

This section details the benefits of working for HEE

What's great about this post?

The post holder will have the opportunity to work on a research project in COVID-19 psychiatry. As such they will have the opportunity to be part of a research team or group working on a variety of potentially high impact research projects to improve understanding of the impacts of COVID-19 on mental and/or physical health. There will be the opportunity to be learn about, and develop skills in the design, delivery, writing up and dissemination of research projects. The role will potentially involve working with a wide range of researchers from varying clinical and non-clinical professions, as well as patient representatives and groups.

What's the terms and conditions?

As an NHS employer the following terms and conditions apply to this post:-

Salary

Dependent on experience

Usually starting at the minimum and progressing in line with NHS TCS 2018 Pay Scales.

Hours of Work

8 hours per week. Monday to Friday

Expected that Fellow will undertake clinical activities up to a maximum of 3 days per week

Permanent, Fixed Term or Secondment

Secondment / Fixed Term

Leave and Bank Holidays: 27 days per year and 8 bank holidays, pro rata. Leave increases to 29 days per year after 5 years service and 33 days per year after 10 years service

Pension: The NHS Pension Scheme is based on length of service and salary at retirement (not dependent on investment returns).

What other opportunities are available to me?

We'll be committed to your training and development from day one. When you join, you'll receive an induction and have the opportunity to attend a variety of skills-related courses, some on-line. Our learning and development strategy includes all the ways that we can support you to 'shine' and excel in your role and is open to our staff at every level in our organisation. It also includes Leadership and Management development and provides the opportunity to apply for funding to support personal development activity.

Other useful information

Job-sharing and part-time working is welcomed. Please indicate this on your application form. We are committed to implementing reasonable adjustments for people with disabilities. If you are successful, you will be issued with a contract of employment which will include a full statement of the terms and conditions of service and Recruitment Profile.