

## Job Description

<b>Job title</b>	<b>Dietitian</b>
<b>Band</b>	<b>5</b>
<b>Responsible To</b>	<b>Head of Nutrition &amp; Dietetic Service</b>
<b>Base</b>	Rotational post for Hull Royal Infirmary, Castle Hill Hospital, Women and Children's Hospital and the Queens Centre for Oncology and Haematology

## Job Summary/Job Purpose

1. Managing a clinical caseload, planning, implementing and evaluating nutrition and dietetic interventions for patients in a variety of clinical settings including inpatients and outpatients.
2. Assessing, planning and treating own caseload of patients providing specialist advice on dietetic care in a range of medical conditions as part of a rotation which includes renal, paediatrics, surgery, neurosciences, respiratory disease, surgery and oncology.
3. Participating in promotion and development of dietetic services within the organisation in conjunction with colleagues.
4. Undertaking audit using research methodology.
5. Supervising and training of student dietitian, dietetic assistants and other colleagues and Health care professionals.
6. Assisting in specialist areas in conjunction with senior colleagues.

## Key Tasks and Responsibilities for the Post

### Clinical

The post holder will work autonomously to provide expert advice to patients, carers, and clinicians for conditions where there are professional/clinical guidelines.

This will involve:

- Nutritional / differential diagnosis (interpretation of biochemistry, anthropometry, clinical condition, diet history and ward assessment)
- Development of evidenced based treatment plans (calculation of nutritional requirements and client centred goals)
- Prescription of dietary treatment and ACBS products for conditions where there are professional/clinical guidelines

- Contribute to discussion on legal and ethical issues when clients are not able to co-operate with oral feeding or prescribed treatment plan where there is a concern regarding physical risk
- Analyse dietary intake and calculate nutritional requirements

***Includes responsibility for***

- Allocated caseload of patients
- Dietetic service to outpatient dietetic clinics/services
- Educating groups of patients, carers, health care professionals and medical staff in general dietetics and nutrition
- Undertaking anthropometric measurements and interpretation as part of nutrition assessment of patients and ongoing monitoring as part of care plan.
- Participation in multidisciplinary case meetings, advising medical staff on instigation and change of appropriate ACBS products/medication for patients.

**Professional**

1. Plan and prioritise own workload in accordance with Health Care Professions Council standards of practice and British Dietetic Association Professional Codes of Conduct.

**Service Delivery**

1. Active participation in improving standards in the department by proposing improvements to services.
2. Production of up to date information resources for use by patients and carers and for presentations to groups.
3. Active involvement with quality issues of the Department will be expected.
4. Participation in standard setting and updating of the Department resources in conjunction with colleagues.
5. Follow Trust, Directorate, Nutrition and Dietetic Service and Professional Standards, protocols and guidelines.

**Leadership**

1. Take an active role in the management of patients who require unscheduled and elective dietetic care, including those requiring nutritional support and therapeutic dietary advice
2. Support the work of the dietetic and multidisciplinary team.

## **Communication**

1. Communication of complex sensitive information in an understandable form to patients, carers, medical, nursing and catering staff. Using negotiation, counselling and behavioural change skills. This will frequently involve those who have communication, emotional, physical and psychological problems.
2. Communication of goals and progress of nutritional care plan to referring health care professionals by writing in medical case notes (paper or electronic), letters to medical practitioner or verbal communication.
3. After successfully completing the Clinical Supervisory Skills Course, participate in training of B and C placement student Dietitians. Includes planning timetables, supervising and assessing progress.
4. Teaching groups of patients/health professionals on general nutrition topics such as food first, nutritional risk and nutritional support.
5. Liaison with relevant staff concerning nutritional care plan, goals and dietary requirements of patients.

## **Education and Training/Staff Management**

1. Teach groups of patients, carers, health care professionals and catering staff, e.g. nutritional screening, therapeutic menus, etc.
2. Identify personal training needs, undertake regular CPD and participate in annual appraisals and practice supervision.
3. Provide clinical supervision of dietetic assistants as directed by Line manager.

## **Information Resources**

1. Comply with Department and Trust policies and procedures, e.g. to maintain records and participate in data collection

## **Research and Development**

1. Undertake clinical audit using research methodology.

## **Health and Safety**

1. In addition to the trusts overall responsibility for health and safety you have a personal responsibility for your own health and safety. As such you are required to inform your line manager of any safety issues that you identify that could affect you or others in your workplace. You must co-operate with management and colleagues

at all times in achieving safer work processes and work places, particularly where this can impact on others.

2. As a trust employee you will be trained in the correct use of any equipment provided to improve safety and health within the trust. You are required to use the equipment when necessary and as instructed, which will include checking the equipment is safe to use prior to its use and must report any defects immediately to your line manager.

## Infection Control

1. In addition to the Trust's overall responsibilities under the Health Act Code of Practice for the Prevention of HCAI 2006 for your safety, you have a personal responsibility to ensure that your work adheres to this Code in the delivery of safe patient care within the organisation.

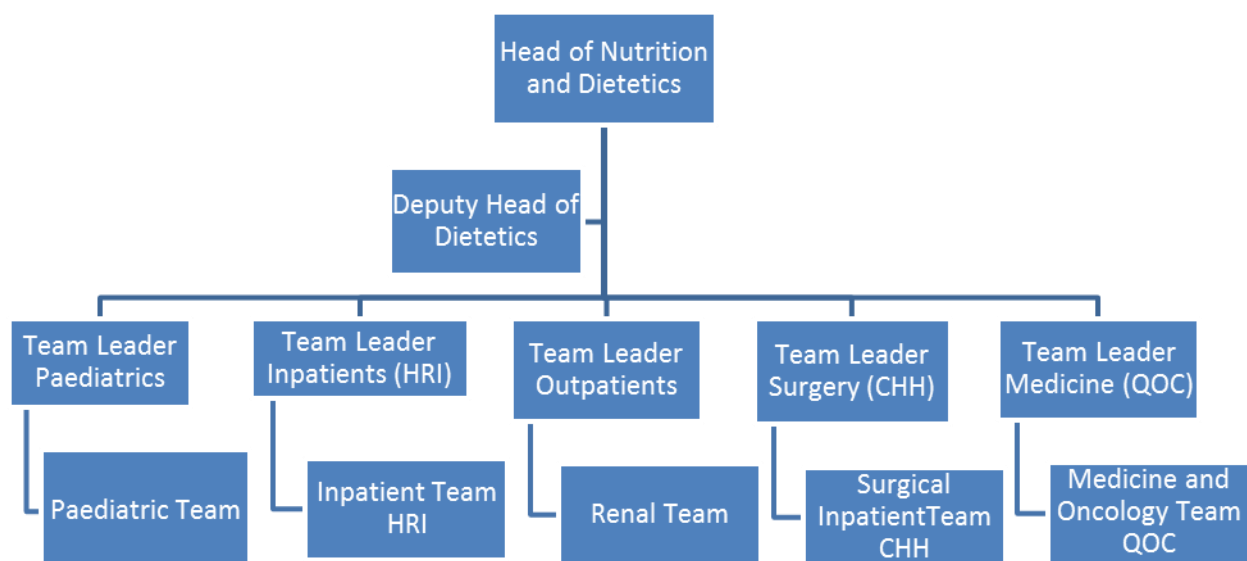
## Confidentiality

1. Maintain complete confidentiality with regard to all patient and staff issues.

## General

1. To undertake any other duties commensurate with the grade as may be required from time to time or on a permanent basis.
2. This job description is not finite and may be subject to alteration in the future. This will take place after consultation with the post holder.

## Organisational Chart



**Remarkable people.**  
**Extraordinary place.**