

The Newcastle upon Tyne Hospitals NHS Foundation Trust

Job Description

Job Details

Job Title	Clinical Technologist (Rehabilitation Engineering Technician)
Band	5
Directorate:	Northern Medical Physics & Clinical Engineering
Service / Function:	Regional Rehabilitation Engineering Mobility Service (RREMS)
Base:	DSC – Freeman Hospital Newcastle upon Tyne James Cook University Hospital, Middlesbrough Community based

Essential Requirements

- HNC / HND or equivalent in an appropriate engineering discipline with relevant experience.
- In depth relevant knowledge gained via a recognised apprenticeship, training scheme, experience or short courses.
- Basic knowledge of anatomy and physiology relevant to area of work.
- Basic knowledge of clinical hazards and infection control.
- Literacy, numeracy and accuracy of a high order.
- Good knowledge of IT software packages (e.g. Word, Excel, PowerPoint, Access, 2D / 3D CAD) and experience of applying them.
- Good knowledge of safe moving and handling techniques in both clinical and non-clinical environment.
- The post holder is expected to follow an approved programme of continuing professional development (CPD).
- Specialist knowledge and skills in medical or scientific equipment relevant to working area.
- Basic knowledge of Health & Safety procedures regarding mechanical devices e.g. Aids for Living.
- The post holder must hold a full, valid driving licence.

Desirable Requirements

- The post holder is registered as a Clinical Technologist with RCT or AHCS or working towards registration.
- Knowledge of the regulations surrounding the construction and testing of technical equipment.
- Ability to communicate engineering advice to all staff groups, patients or their carer's.
- Experience preferably of disability aids
- Good team worker.
- Experience working with clients with complex physical needs.

Job Purpose

- Providing the technical aspects of RREMS.
- Ensuring the safe introduction, delivery / handover of manufactured / modified products into clinical, domestic and educational establishments. Providing both verbal and clear written instruction regarding its safe use.
- Working in collaboration with the appointed repair agent to monitor and report on performance activities relating to maintenance, repairs and refurbishment of manual and powered wheelchairs.
- Compliance with all relevant legislative and other national and local requirements.
- Safe and efficient operation of all engineering / scientific equipment on which you have been trained.
- Reporting of adverse incidents to appropriate organisational establishments.
- Carry out powered wheelchair environmental risk and accessibility assessments.
- Undertake other duties and responsibilities within the scope of RREMS to meet the changing needs and circumstances of the service.
- Contribute to research and development projects.

Dimensions

- The Northern Medical Physics and Clinical Engineering Directorate provides both clinical services and research in a wide range of scientific and technical specialties on behalf of the Newcastle upon Tyne Hospitals NHS Foundation Trust (NUTH).
- The Directorate has a compliment of 130 staff (February 2015).
- The Directorate is organised into units and sub units, which are based in hospitals throughout the North East and Cumbria, serving patients within tertiary, acute and primary care settings.
- RREMS Clinical Technologists specialise in the provision of Rehabilitation Engineering which is the clinical application of engineering principles and technology within the aim to restoring or improving the physical, mental and social wellbeing of 80000 NHS wheelchair users (of which approx. 5000 have powered wheelchairs) and their carers to their maximum potential.

Services provided by Northern Medical Physics and Clinical Engineering

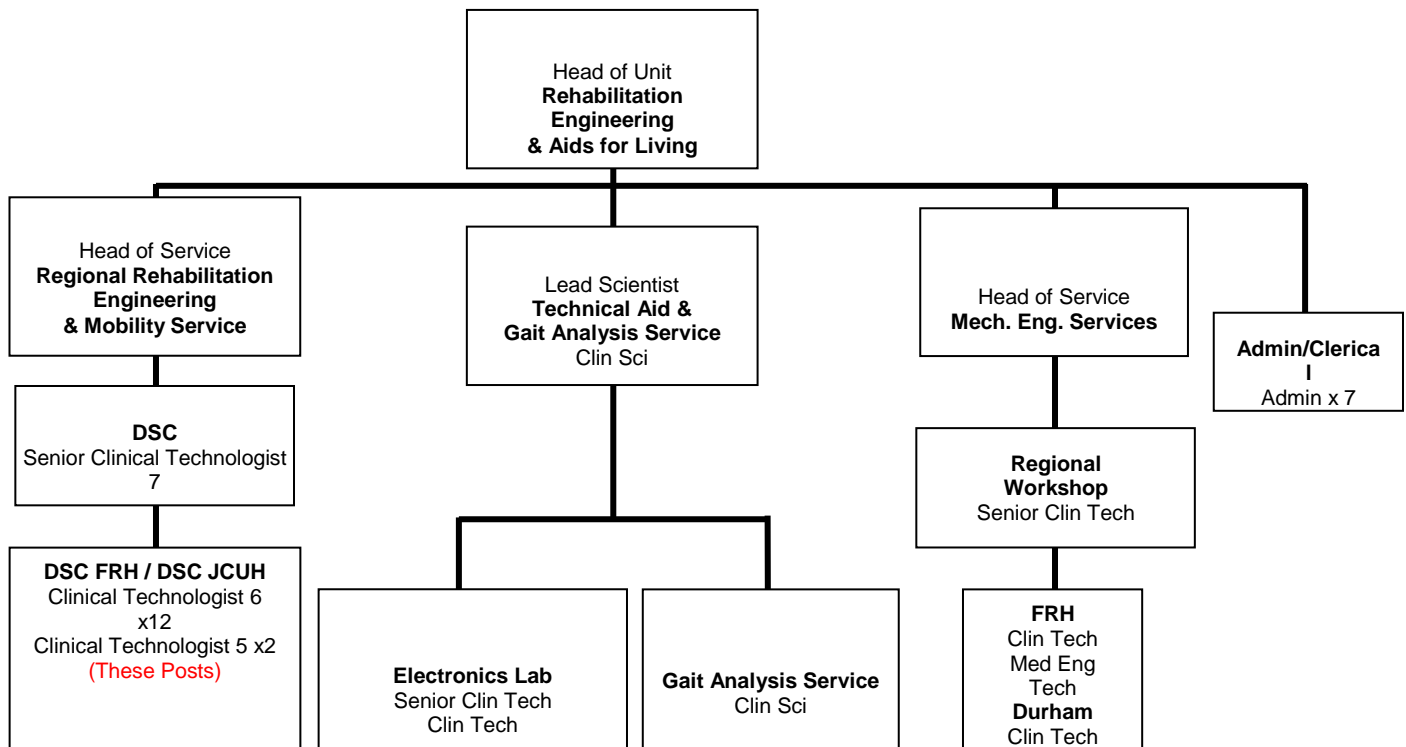
- Audiology
- Bone Densitometry
- Nuclear Medicine
- Radiotherapy Physics and Technology
- Regional rehabilitation engineering, mobility and technical aids services
- Vascular Ultrasound
- Clinical Instrumentation and Measurement
- Diagnostic radiology and radiation protection
- Laser Protection
- Ultrasound Quality Assurance services
- Radiation Protection Advisor Services
- Electronic and Mechanical Engineering Services
- Equipment Management
- Risk Management / Health and Safety
- Training schemes – for both Physicists and Technologists

Organisational Arrangements

Reports to: Senior Clinical Technologist / Rehabilitation Engineer

Accountable to: Head of Service

Organisation chart for REAL



Knowledge Training and Experience

- See Essential Requirements

Skills

Communication and Relationships

- Establish and maintain first class working relationships with colleagues, medical staff and other healthcare professionals.
- Provide and receive complex information.
- Explains procedures to patients and others who may have significant barriers to accepting information.
- Provide accurate oral and written reports.
- Well-developed patient handling skills.

Analytical and Judgemental

- Interpretation of complex technical information.
- Recognition of faults and taking appropriate action.

Planning and Organisational

- Responsible for planning own workload, some of which is ongoing.

Physical Dexterity

- Highly developed physical skills to operate expensive and complex equipment
- Ability to operate equipment safely and effectively for prolonged periods of time.
- Knowledge of safe lifting and handling techniques.
- Proficient keyboard skills.

Key Result Area

Patient / Client Care

- Provides technical services for clinical use.
- To ensure Trust standards and guidelines on infection control are followed.
- Respond immediately, correctly and professionally to any patient emergency which arises.
- Carry out tests in accordance with appropriate protocol.

Policy and Service Development

- Post holder will be expected to follow policy and guidelines within their own area.
- Contributes to discussions on changes to policies and procedures within the section to ensure reflect best practice, thus maintaining and improving the quality of the services.

Financial and Physical Resources

- Responsible for the safe use of expensive equipment.
- Report all faults on equipment to senior colleagues.

Human Resources

- Provide training in own discipline to new or less experienced staff.

Information Resources

- Records patient and technical data into database accurately.
- Regularly uses computer software to design mechanical components and assemblies.
- Regularly uses computer software to programme machinery for production of components.
- Computer generated programmes may be stored for own / other use at a later date.

Research and Development

- Participate in development of new treatment techniques.
- Occasionally undertakes equipment testing and trials of clinical devices.
- Occasionally manufacture components and devices as part of the Directorate's medical device development activities.

Freedom to Act

- Post holder is responsible for management of own work schedule.
- Works independently but within appropriate occupational guidelines.

Effort and Environment

Physical

- There is a frequent requirement to sit in a restricted position.
- Occasionally exert moderate physical effort for short periods.
- Regular handling of light components/equipment.
- Occasional use of handling equipment to move heavier component/equipment.

Mental

- Frequent periods of prolonged concentration while using technical software for design and manufacturing purposes.

Emotional

- Occasional exposure to direct distressing or emotional circumstances.

Working Conditions

- Occasional exposure to unpleasant substances or patients with serious infectious conditions or devices contaminated with bodily fluids.
- VDU use.
- Frequent Travel required.

Signed:
(Post holder)

Date:

Signed:
(Directorate Manager or equivalent)

Date:

The Newcastle upon Tyne Hospitals NHS Foundation Trust

Person Specification

JOB TITLE: Clinical Technologist (Rehabilitation Engineering Technician)

BAND: 5

DIRECTORATE: NMPCE

<u>REQUIREMENT</u>	<u>ESSENTIAL</u> Requirements necessary for safe and effective performance of the job	<u>DESIRABLE</u> Where available, elements that contribute to improved/immediate performance in the job	<u>ASSESSMENT</u>
Qualifications & Education	<ul style="list-style-type: none"> HNC / HND or equivalent in an appropriate engineering discipline with relevant experience. The post holder must be registered as a Clinical Technologist with RCT or AHCS or working towards registration. The post holder must hold a full, valid driving licence. 		
Knowledge & Experience	<ul style="list-style-type: none"> In depth relevant knowledge gained via a recognised apprenticeship, training scheme, experience or short courses. Basic knowledge of anatomy and physiology relevant to area of work. Basic knowledge of clinical hazards and infection control. Good knowledge of IT software packages (e.g. Word, Excel, PowerPoint, Access, 2D / 3D CAD) and experience of applying them. Good knowledge of safe moving and handling techniques in both clinical and non-clinical environment. Specialist knowledge and skills in medical or scientific equipment relevant to working area. Basic knowledge of Health & Safety procedures regarding mechanical devices e.g. Aids for Living. 	<ul style="list-style-type: none"> Knowledge of the regulations surrounding the construction and testing of technical equipment. Ability to communicate engineering advice to all staff groups, patients or their carer's. Experience preferably of disability aids Experience working with clients with complex physical needs. 	
Skills & Abilities	<ul style="list-style-type: none"> Literacy, numeracy and accuracy of a high order. 	<ul style="list-style-type: none"> Ability to communicate engineering advice to all staff groups, patients or their carer's. 	
Values / Behavioural / Attitudes	<ul style="list-style-type: none"> The post holder is expected to follow an approved programme of continuing professional development (CPD). Reliable and trustworthy. 	<ul style="list-style-type: none"> Good team worker. 	
Core Behaviours	<ul style="list-style-type: none"> Alignment to Trust Values and Core Behaviours. 		

CANDIDATE:

REFERENCE NO:

SIGNED BY:

DATE:

DESIGNATION: