

The Newcastle upon Tyne Hospitals NHS Foundation Trust

Job Description

Job Details

Job Title	Clinical Technologist
Band	5
Directorate:	Northern Medical Physics & Clinical Engineering
Department:	Diagnostic Radiology Physics
Base:	Freeman Hospital

Essential Requirements:

- HNC/HND or equivalent experience.
- Registration with HCPC (radiographers) or eligible to work towards membership of the Professional Standards Authority Accredited Register of Clinical Technologists
- Full UK driving licence
- Experience carrying out scientific measurements or tests.
- Experience of analysing data and writing reports.
- Basic knowledge and understanding of all relevant safety principles, standards and legislation applied to the clinical use of x-ray equipment.
- Basic knowledge of anatomy and physiology relevant to area of work
- Basic knowledge of clinical hazards and infection control
- Good knowledge of safe moving and handling techniques in non-clinical environment.
- Numeracy and accuracy of a high order.
- Good knowledge of IT software packages (e.g. Word, Excel, PowerPoint, Access) and experience of applying them
- The ability to work under pressure.
- Full UK driving licence

Desirable Requirements:

- Degree in Clinical Technology, or a degree or equivalent qualification in another relevant subject e.g. Applied Physics, Radiography or Biomedical Science.
- Some knowledge of the physics and engineering principles involved in the operation of x-ray equipment
- Experience of working with X-ray or radiation measuring equipment.
- in-depth specialist knowledge acquired through training courses
- CPD evidence
- Experience in recording data accurately to ensure documentation is maintained to a high standard

Job Purpose

- Providing technical aspects of diagnostic radiology physics services region-wide.

- Assist in a range of specialist healthcare science activities
- Participate in research and development projects

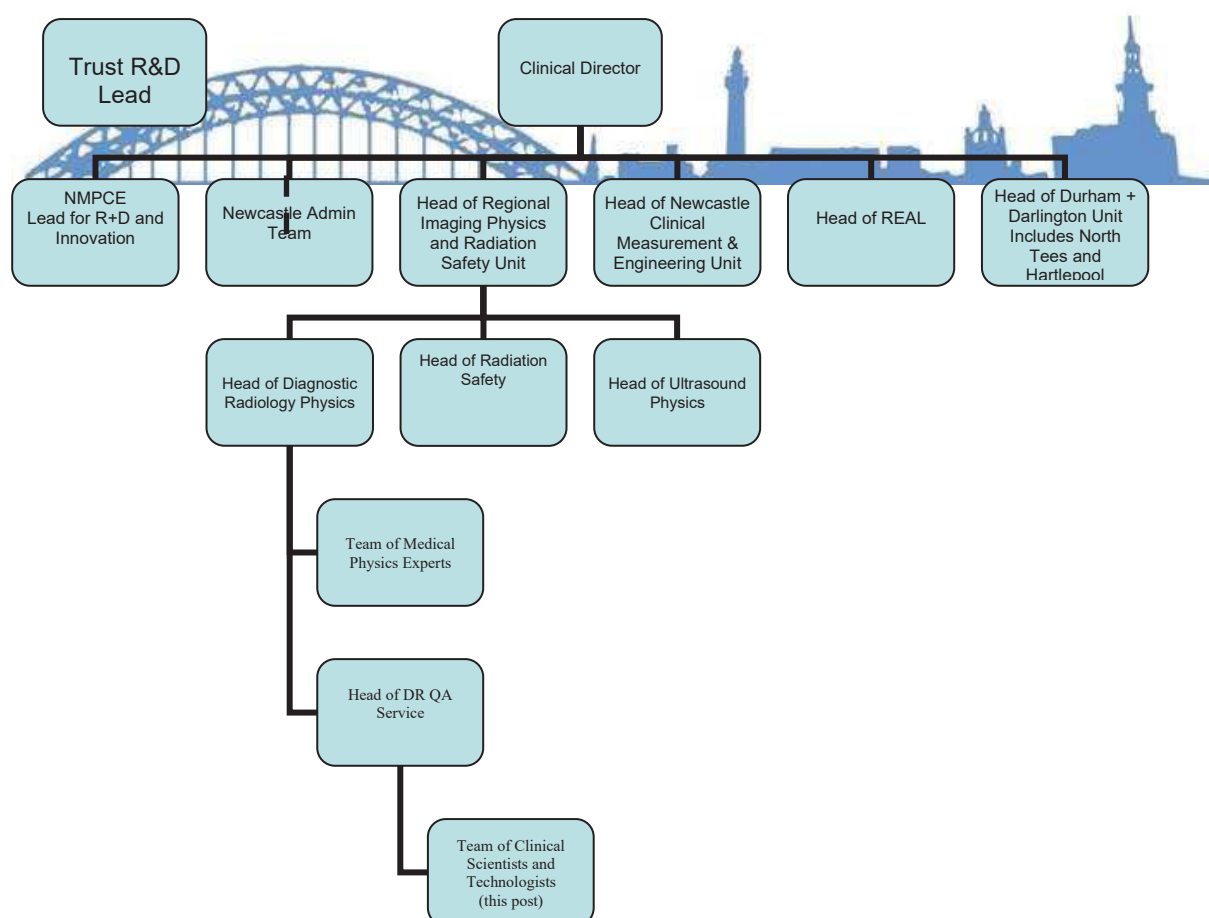
Dimensions

- The Northern Medical Physics and Clinical Engineering is a Clinical Directorate of the Newcastle upon Tyne Hospitals NHS Foundation Trust (NUTH).
- The Directorate provides both clinical services and research in a wide range of scientific and technical specialities.
- The Directorate has a compliment of 130 staff (February 2015).
- The Directorate delivers medical physics and clinical engineering services to NUTH and to a number of other healthcare organisations across Northern England. We also employ staff based in units at North Tees and Hartlepool NHS Foundation Trust, County Durham and Darlington NHS Foundation Trust and North Cumbria University Hospitals NHS Trust.
- We serve patients within tertiary, acute and primary care settings.

Organisational Arrangements

Reports to: Head of Diagnostic Radiology QA Service

Accountable to: Head of Diagnostic Radiology Physics



Knowledge Training and Experience

- See essential Requirements

Skills

Communication and Relationships

- Establish and maintain first class working relationships with colleagues, medical staff and other healthcare professionals
- Provide and receive complex information
- Provide accurate oral and written reports

Analytical and Judgemental

- Interpretation of complex technical information
- Recognition of faults and taking appropriate action

Planning and Organisational

- Responsible for planning own workload, some of which is ongoing.

Physical Dexterity

- Highly developed physical skills to operate expensive and complex equipment
- Ability to operate equipment safely and effectively for prolonged periods of time.
- Knowledge of safe lifting and handling techniques.
- Proficient keyboard skills

Key Result Area

Patient / Client Care

- Provides technical services for clinical equipment
- To ensure Trust standards and guidelines on infection control are followed
- Respond timely, correctly and professionally to client requests for service.
- Carry out tests in accordance with appropriate protocol.

Policy and Service Development

- Post holder will be expected to follow policy and guidelines within their own area.
- Contributes to discussions on changes to policies and procedures within the section to ensure reflect best practice, thus maintaining and improving the quality of the services

Financial and Physical Resources

- Responsible for the safe use of expensive equipment
- Report all faults on equipment to senior colleagues

Human Resources

- Provide training in own discipline to new or less experienced staff

Information Resources

- Records patient and technical data into database accurately.
- Regularly uses computer software to produce test reports

Research and Development

- Participate in development of new equipment testing techniques
- Occasionally undertakes equipment testing and trials of clinical devices

Freedom to Act

- Post holder is responsible for management of own work schedule
- Works independently but within appropriate occupational guidelines.

Effort and Environment

Physical

- There is a frequent requirement to sit in a restricted position
- Occasionally exert moderate physical effort for short periods.
- Regular handling of light components/equipment
- Occasional use of handling equipment to move heavier component/equipment

Mental

- Frequent periods of prolonged concentration while using technical software for equipment testing purposes.

Emotional

- Occasional exposure to direct distressing or emotional circumstances

Working Conditions

- Occasional exposure to unpleasant substances or patients with serious infectious conditions or devices contaminated with bodily fluids.
- VDU use.
- Regular requirement to drive to other sites to carry out equipment tests.



Signed:
(Post holder)

Date:

Signed:
(Directorate Manager or equivalent)

Date: